

Title: Prognostic value of adiponectin for cardiovascular disease and mortality

Short title: Dekker et al Adiponectin and mortality

Authors: Jacqueline M. Dekker, PhD, Tohru Funahashi, PhD, Giel Nijpels, MD, PhD, Stefan Pilz, MD, Coen D.A. Stehouwer, MD, PhD, Marieke B. Snijder, PhD, Lex M. Bouter, PhD, Yuji Matsuzawa, MD, PhD, Ichiro Shimomura, MD, PhD and Robert J. Heine, MD, PhD.

Affiliations:

EMGO Institute, VU University Medical Center, Amsterdam, The Netherlands (Dekker, Nijpels, Snijder, Bouter, Heine)

Department of Internal Medicine and Molecular Science, Graduate School of Medicine, Osaka University, Osaka, Japan (Funahashi, Matsuzawa, Shimomura)

Department of General Practice, VU University Medical Center, Amsterdam, the Netherlands (Nijpels)

Department of Internal Medicine, Division of Endocrinology and Nuclear Medicine, Medical University of Graz, Austria (Pilz)

Department of Public Health, Social and Preventive Medicine, Mannheim Medical Faculty, University of Heidelberg, Mannheim, Germany (Pilz)

Department of Internal Medicine, Academic Hospital Maastricht, Maastricht, the Netherlands (Stehouwer)

Institute of Health Sciences, Faculty of Earth and Life Sciences, Vrije Universiteit Amsterdam, The Netherlands (Snijder)

Department of Endocrinology, VU University Medical Center, Amsterdam, the Netherlands (Heine)

Correspondence and reprint requests to:

Jacqueline M. Dekker

Institute for Research in Extramural Medicine, VU University Medical Center,

Van der Boechorststraat 7, 1081 BT Amsterdam, The Netherlands

Telephone: +31 20 444 8173; Fax: +31 20 444 8181

E mail: jm.dekker@vumc.nl

Disclosure statement: The authors have nothing to disclose

Word count abstract: 249

Total words text: 3129

Number of tables: 5 in the manuscript plus 2 supplemental tables

Number of figures: 2

References: 41

Grants: The Hoorn Study has been made possible by the Vrije Universiteit Amsterdam and the VU University Medical Center, and by grants from the Dutch Diabetes Research Foundation, the Dutch Organization for Scientific Research, the Netherlands Heart Foundation, and the Health Research and Development Council of the Netherlands.

Key words: adiponectin, insulin sensitivity, cardiovascular diseases, all-cause mortality, epidemiology

Abstract :

Context: Low adiponectin concentrations are associated with the presence of an adverse cardiovascular disease (CVD) risk profile.

Objective: We studied the predictive value of adiponectin levels for all-cause and CVD mortality and CVD morbidity.

Design, Setting and Participants: Population-based cohort study in Hoorn, The Netherlands, which started in 1989 and included 2484 participants, aged 50-75 years.

Main outcome measure: Hazard ratios (HR) with 95% confidence interval (CI) per SD change in log-adiponectin for all-cause and CVD mortality and CVD morbidity.

Results: Adiponectin was determined for 1077 men and 1248 women. Higher adiponectin reduced the risk of non-fatal CVD in women [HR with 95% CI 0.72 (0.61-0.90) in women and 0.92 (0.79-1.06) in men], but not the risk of all-cause or CVD mortality. In contrast, after adjustment for cardiovascular risk factors, higher adiponectin was a significant predictor of all-cause and CVD mortality [HR for CVD mortality 1.45 (1.10-1.92) in women and 1.30 (1.04-1.63) in men]. Higher adiponectin was associated with increased risk of CVD mortality in people with prevalent CVD [HR 1.27 (0.98-1.63)], and with reduced risk in people without [HR 0.90 (0.73-1.11)]. After adjustment for cardiovascular risk factors, the HRs for CVD mortality were 1.60 (1.14-2.23) for patients with and 1.38 (1.06-1.80) for patients without prevalent CVD.

Conclusions: High levels of adiponectin predict mortality, in particular in patients with prevalent CVD. We hypothesize that adiponectin protects against metabolic and vascular diseases, but in patients already afflicted with CVD adiponectin is compensatory upregulated and therefore indicates a high mortality risk.

Introduction

Adiponectin is an adipocytokine, which is mainly produced by the adipose tissue (1). Though it is the most abundantly produced protein of the fat-cell, plasma levels are reduced in obese patients (1). There is growing evidence that reduced adiponectin concentrations indicate an increased cardiovascular risk because hypoadiponectinemia is associated with the components of the metabolic syndrome, in particular with insulin resistance, elevated triglycerides and low HDL (1,2). Apart from this, adiponectin possesses anti-inflammatory properties and exerts direct anti-atherosclerotic and cardioprotective effects (2). Clinical studies have shown that low adiponectin concentrations are associated with endothelial dysfunction, increased carotid intima-media thickness and coronary artery disease (CAD) (2-4). High adiponectin concentrations are independent of other cardiovascular risk factors associated with a lower prevalence of acute coronary syndromes (ACS) (4). Hence, it was suggested that low adiponectin concentrations are a cardiovascular risk factor and that therapeutic strategies that enhance the secretion or action of this adipocytokine might reduce the incidence of cardiovascular diseases (CVD) (1,2).

However, several recently published studies on the prospective association between adiponectin and CVD events/mortality showed inconsistent results. Five studies reported that adiponectin was not independently associated with future CVD (5-9). Low adiponectin concentrations turned out as a risk factor for future CVD in some studies (10-16), whereas others showed that high adiponectin levels were associated with an increased risk of CVD and/or mortality (17-23). The underlying mechanisms for these contradictory results are still unclear but may be due to differences in the study populations. Towards this it was speculated that low adiponectin predicts cardiovascular events in low-risk populations for CVD, whereas in high-risk populations a counterregulatory increase of adiponectin occurs that is responsible for the elevated cardiovascular risk associated with high adiponectin levels (24,25). To test this hypothesis we studied the association of adiponectin with 15-year all-cause and CVD mortality and 10-year non-fatal CVD in the Hoorn Study, a large population based study, distinguishing subjects with and without history of CVD.

Methods

Study Population

The Hoorn Study is a Dutch cohort study of diabetes and diabetes complications in the general population, which started in 1989. The cohort and the baseline measurements have been described in detail previously (26). Briefly, a random selection of 3553 men and women of 50 to 75 years old was taken from the population register. A total of 2540 (71.5%) agreed to participate, and after exclusion of 56 non-Caucasian participants, the Hoorn Study population consisted of 2484 men and women. For the present study we excluded 159 subjects with missing adiponectin data, leaving 1077 men and 1248 women for the analyses. This number of study probands was not determined by power calculations for specific hypotheses. All participants gave their written informed consent. The study was approved by the Ethics Committee of the VU University Medical Center.

Baseline Examination and Measurements

At the baseline medical examination a blood sample was taken from all participants after overnight fasting. Adiponectin was determined in 2004 in spare baseline plasma samples that had been stored at -80 degrees and had never been thawed before. Adiponectin was determined with a latex turbidometric immunoassay. The inter- and intra-assay coefficients of variation were less than 2.0 % and less than 3.1 %, respectively. A standard 75-g oral glucose tolerance test was performed in all subjects, except those using glucose-lowering medication. Plasma glucose was determined with a glucose dehydrogenase method (Merck, Darmstadt, Germany). Diabetes and impaired glucose metabolism were defined according to WHO criteria of 1999 (27). Fasting insulin was determined with an insulin-specific double-antibody radio-immuno-assay (antibody: Linco SP21, St Louis, Mo, USA). Fasting triglycerides, total and HDL-cholesterol were determined by enzymatic techniques (Boehringer-Mannheim, Mannheim, Germany). Serum alanine aminotransferase (ALT) enzyme activity was measured according to the method of the International Federation of Clinical Chemistry from 1985, and expressed as U/L. Serum creatinine level was determined in $\mu\text{mol/l}$, and renal function (glomerular filtration rate) was estimated by the Cockcroft-Gault formula in $\text{ml/min per } 1.73 \text{ m}^2$.

Waist and hip circumference, weight and height were measured. Body mass index (BMI) was calculated as the ratio of weight and height squared. Blood pressure was measured twice on the right arm with a random-zero sphygmomanometer (Hawksley-Gelman Ltd, Lancing, UK), and the mean was used for computations. Information about use of medication, including antihypertensive medication, smoking status (non-smokers, ex-smokers and current smokers), and history of cardiovascular disease at baseline (assessed by Rose Questionnaire) were determined by self-administered questionnaire. Cigarette-years were calculated as the product of years smoked and mean number of cigarettes per day.

Follow-up of Morbidity and Mortality

The cohort is being followed with respect to morbidity and mortality. Vital status is obtained from the population register of the city of Hoorn. Causes of death were coded by reviewing death certificates and non fatal CVD events were classified by using medical records of general practitioners and the local hospital. Causes of death were coded according to the International Classification of Diseases, Injuries and Causes of Death, ninth revision (ICD-9).

CVD mortality was defined with ICD codes 390-459 (Diseases of the circulatory system) or 798 (sudden death, cause unknown), because sudden death in general is of CVD origin. Vital status until January 2004 was known for all subjects. Cause of death could not be obtained for 35 men and 28 women.

Data on non-fatal outcomes was complete until 2000, for 845 men and 909 women who gave permission to access their hospital files and/or contact their general practitioners. Non-fatal CVD was defined as documented angina pectoris (chest pain followed by coronary artery bypass surgery or angioplasty, or in the presence of > 50 % stenosis or electrocardiographic changes or positive exercise test), myocardial infarction (in the presence of at least 2 of the following: typical pain, elevated enzymes and/or ECG changes), congestive heart failure (in the presence of at least 2 of the following: shortness of breath, cardiomegaly, dilated neck veins or 1 of the former in the presence of oedema or tachycardia), stroke or transient ischemic attack (sudden onset of symptoms, neurological symptoms or change of consciousness), peripheral disease (by procedure or typical pain accompanied by stenosis

or ankle arm blood pressure ratio < 0.90 or positive vascular stress test).

Statistical Analyses

Population characteristics were compared between sex-specific quartiles of baseline plasma adiponectin levels. Analyses were performed separately for men and women because of the different fat distribution in women and because women have higher levels of adiponectin than men. For proportions, trends over the quartiles were tested with Chi-square test with P for linear-by-linear test. For continuous variables the Pearson and age-adjusted partial correlations with the log of adiponectin were determined. Survival curves of 15-year all-cause mortality and CVD mortality and 10-year non-fatal CVD in quartiles of adiponectin were plotted. Age-adjusted hazard ratios (HR) for all-cause mortality, CVD mortality and non-fatal CVD for the 2nd- 4th quartile relative to the lowest quartile of adiponectin were estimated with Cox proportional hazards analyses. We first adjusted for all possible mediating or confounding variables one by one, and then combined all these variables into one model. To study the possible modifying effect of the presence of diabetes or prevalent CVD, stratified analyses were performed. A P-value below 0.05 was considered statistically significant. Statistical analyses were performed with SAS for windows, version 8.0 (SAS Institute Inc., Cary, NC, USA) and with SPSS, version 15.0 (SPSS Inc., Chicago, IL, USA).

Results

Mean adiponectin was higher in women than in men, and was increasing with age and lower glomerular filtration rate in both genders (Table 1). High adiponectin was strongly associated with a more favorable cardiovascular disease risk profile, with lower weight, smaller waist, higher HDL cholesterol and lower triglycerides, lower insulin and glucose levels, and lower ALT. Associations were not significant for total cholesterol. In women there was a trend of lesser smoking and higher participation in sports activities with higher levels of adiponectin, in men the reverse was observed for smoking and there was no significant association with sports activities. Adiponectin was not associated with prevalent CVD at baseline. The baseline characteristics according to adiponectin quartiles for study participants with and without prevalent

CVD are shown in the supplemental Table A and B.

Until January 2004, after 15 year of follow-up, 286 men and 219 women had died, among whom 121 men and 83 women due to CVD. Until January 2000, after 10 year of follow-up, 195 men and 128 women had a non-fatal CVD event. As shown in Figure 1, all-cause mortality was highest in both men and women with the highest adiponectin levels. The higher risk of mortality could not be attributed to any particular causes, and the association was also observed for cancer mortality, and non-cancer non-CVD mortality (data not shown).

As shown in Table 2, adjustment for age did not explain the positive association between adiponectin and all-cause mortality in men. In women, but not in men, there was a U-shaped association with all-cause and CVD mortality, and a significant negative association with non-fatal CVD was observed in women and a non significant trend in men (Table 2). Adjustment for possible mediating or confounding variables resulted in a strong and statistically significant increased risk of CVD mortality with higher adiponectin level for both men and women (Table 3). The same pattern was observed for all-cause mortality and for non-fatal CVD (data not shown). When we stratified for the presence of type 2 diabetes, no differences were observed in the relationships for all-cause and CVD mortality, nor for non-fatal CVD (data not shown). For all-cause and CVD mortality analyses of the entire study population we observed P-values for interaction terms of prevalent CVD with dummy variables of adiponectin quartiles all less than 0.15. We therefore performed subgroup analyses and found that high adiponectin was associated with increased mortality risk in both sexes with prevalent CVD at baseline (Table 4). In women without prevalent CVD, the mortality risk was reduced in higher adiponectin quartiles, and in men there was a U-shaped association with reduced risk in the second and increased risk in the third and fourth adiponectin quartile (Table 4). After adjustments for cardiovascular risk factors (according to the fully adjusted model in Table 3) the HR (with 95% confidence interval) for cardiovascular mortality including both sexes was 1.38 (1.06-1.80) for patients without and 1.60 (1.14-2.23) for patients with CVD per SD change in log adiponectin. Accordingly, the HR for all-cause mortality was 1.33 (1.15-1.55) for patients without and 1.69 (1.33-2.16) for patients with

prevalent CVD, with similar results for sex-stratified analyses (data not shown).

The results for the subgroup with available data for non-fatal CVD events were similar to those from the entire study population. In this subgroup, the age-adjusted HRs for all-cause mortality were 0.98 (0.79-1.23) for women and 1.17 (0.92-1.49) for men with no history of CVD at baseline, and 1.35 (0.98-1.86) for women and 1.16 (0.86-1.57) for men with prevalent CVD, and the age-adjusted HRs for CVD mortality were 0.81 (0.58-1.13) for women and 0.93 (0.64-1.34) for men without CVD and 1.26 (0.80-1.99) for women and 1.10 (0.75-1.62) for men with prevalent CVD. For non-fatal events the age-adjusted HRs per SD change in log adiponectin were 0.74 (0.59-0.93) for women and 0.91 (0.73-1.14) for men without CVD at baseline, and 0.73 (0.54-0.99) in women and 0.86 (0.65-1.14) in men with prevalent CVD. Baseline characteristics for the subgroup with available data for non fatal CVD events were approximately identical to those of the entire study population (data not shown).

Discussion

High adiponectin was associated with a higher age and a beneficial CVD risk profile at baseline in the general Dutch population. Risk of non-fatal CVD was significantly reduced in women with higher adiponectin, and there was a non significant trend for such an association in men. In contrast, high adiponectin was not associated with lower CVD mortality and all-cause mortality but after adjustment for cardiovascular risk factors, high adiponectin was significantly associated with increased all-cause and cardiovascular mortality. This association of high adiponectin and increased mortality risk was more pronounced in patients with prevalent CVD than in those without. Adiponectin is considered to protect against CVD, mediated by direct effects on the cardiovascular system and by its association with a favorable cardiovascular risk profile (2). Adiponectin inhibits pro-atherogenic processes in endothelial cells, suppresses macrophage to foam cell formation and exerts anti-inflammatory effects for instance through inhibition of NF- κ B (2). Stimulation of AMP-activated kinase (AMPK) by adiponectin reduces insulin resistance and recent data from the Hoorn Study show that high adiponectin levels are associated with a reduced risk of impaired glucose tolerance and type 2 diabetes (1,28). Furthermore, several cross-sectional and genetic studies support the notion

that low adiponectin levels are associated with all components of the metabolic syndrome and serve as a risk factor for CAD (1,2).

However, several recent studies on the prospective association between adiponectin and CVD events/mortality showed inconsistent results (5-23). Unexpectedly, several of these studies, in particular those including patients already afflicted with or at high risk for CVD, found that high adiponectin was associated with an increased risk of mortality (17,18,20-23). As an explanation for these results, it was hypothesized that in CVD a counterregulatory increase of adiponectin occurs that represents a defence mechanism of the body against the cardiovascular alterations and the pro-inflammatory state associated with CVD (24,25). This is in line with our results because we show that high adiponectin is significantly associated with an increased mortality risk in particular in patients with prevalent CVD. These findings fit well to observations that adiponectin exerts protective functions in early atherosclerosis by reducing a proatherogenic endothelial activation, but in patients with vascular diseases adiponectin was positively correlated with serum concentrations of markers of endothelial activation/injury like CD146 or VCAM-1, suggesting a possible upregulation of adiponectin in response to endothelial damage (2,29,30). It was also implicated that inflammation, lipotoxicity and oxidative stress increased adiponectin expression, whereas adiponectin counteracts these pro-atherogenic influences by its anti-inflammatory and anti-oxidative properties (1,2,31-33). Furthermore, it was shown that adiponectin increases in patients with myocardial dysfunction although adiponectin is suggested to protect against heart failure because it attenuates cardiac hypertrophy (2,18,22,23). All these data suggest that adiponectin protects against CVD, but it may be compensatory upregulated in response to cardiovascular damage, or due to the wasting process in heart failure with elevation of adiponectin as a consequence of weight loss (22). Weight loss and malnutrition, both associated with high adiponectin, predict mortality in patients with CVD and could therefore partially account for the relationship between high adiponectin and mortality (1,34,35). Our results of an association between adiponectin and mortality in patients with CVD fit well to the concept of “reverse epidemiology”, a term that is used to describe the inverse association between traditional cardiovascular risk factors (e.g. BMI) and mortality in patients with heart and renal

failure (34,35). In the present study, however, adjustment for BMI did not explain the associations between adiponectin and mortality. Alternatively, “adiponectin resistance”, possibly due to downregulation of adiponectin receptors as reported in obesity and insulin resistance, could also trigger a counterregulatory increase of adiponectin in high risk patients with prevalent CVD (1).

It should also be noted that adiponectin serum concentrations are inversely correlated with GFR and are raised in patients with albuminuria (18,21,29,30). Underlying mechanisms for the elevation of adiponectin in chronic kidney disease remain unclear but may at least in part be due to reduced renal clearance (36). However, GFR in the present study could not explain the association between high adiponectin and high mortality risk. Apart from this, adiponectin correlates with age and might therefore also be compensatory up-regulated in the aging process of the body. Finally, it cannot be excluded that adiponectin also exerts harmful effects that contribute to the increased mortality risk associated with high adiponectin. Towards this it could be speculated that beneficial effects of adiponectin might become deleterious in advanced disease stages of CVD, in particular when the compensatory increase of adiponectin is overwhelming. In this context, the ability of adiponectin to decrease body weight, mediated by increases in energy expenditure and by central effects in the brain, might be harmful in advanced stages of CVD, when a decline in body weight is associated with an adverse cardiovascular outcome (1,34,35,37). Considering that adiponectin-mimetic therapies have been suggested to be introduced in the treatment of metabolic and CVD (1,2), it will be important to elucidate the underlying mechanisms for the association between adiponectin and mortality, and to carefully monitor therapeutic interventions that aim to enhance the secretion or action of adiponectin.

Apart from low concentrations of a globular form that is cleaved from the full-length protein, adiponectin forms multimers that circulate in plasma in a low-, middle-, and high-molecular weight form (1,2). These isoforms have different binding affinities to the adiponectin receptors (AdipoR1 and AdipoR2) and may therefore exert different bioactivities (1,2). Recent data indicate that the high-molecular weight form is the most active and clinically relevant form, at least for the metabolic and vascular-protective effects of adiponectin (1,2,38,39). However, it was shown

that globular adiponectin may contribute to myocardial hypertrophy suggesting that not all isoforms of adiponectin protect against CVD (40). A limitation of the present study may be that the different isoforms of adiponectin were not determined because at the time of our measurements the recently developed ELISA systems were not available (39). Furthermore, information on non-fatal CVD was available for a subpopulation, and for a shorter follow-up period. To exclude the possibility that the differences in population size and follow-up duration explain the differences in the associations between adiponectin and non-fatal CVD and mortality, we also studied 10-year all-cause and CVD mortality in the same sub-cohort. The associations did not differ from those observed in the total cohort, and for a longer follow-up duration.

During the revision process of our manuscript, other data from older men were published that confirm a positive association between adiponectin and mortality, with the most significant results for patients with heart failure (41).

In conclusion, high plasma adiponectin level is associated with a favorable lipid and glucose metabolism, and with reduced risk of CVD events in women. However, higher adiponectin was associated with increased risk of mortality, in particular in people with a history of CVD. We hypothesize that adiponectin protects against metabolic and vascular diseases, but in patients already afflicted with CVD adiponectin is compensatory upregulated in advanced disease stages and therefore indicates a high mortality risk in these patients. It remains a challenge for the near future to further elucidate the underlying mechanisms for our results.

Acknowledgement

The Hoorn Study has been made possible by the Vrije Universiteit Amsterdam and the VU University Medical Center, and by grants from the Dutch Diabetes Research Foundation, the Dutch Organization for Scientific Research, the Netherlands Heart Foundation, and the Health Research and Development Council of the Netherlands.

References

1. **Kadowaki T, Yamauchi T** 2005 Adiponectin and adiponectin receptors. *Endocrine Reviews* 26:439-451
2. **Szmitko PE, Teoh H, Stewart DJ, Verma S** 2007 Adiponectin and cardiovascular disease. *Am J Physiol Heart Circ Physiol* 292:1655-63
3. **Pilz S, Horejsi R, Möller R, Almer G, Scharnagl H, Stojakovic T, Dimitrova R, Weihrauch G, Borkenstein M, März W, Schauenstein K, Mangge H** 2005 Early atherosclerosis in obese juveniles is associated with low serum levels of adiponectin. *J Clin Endocrinol Metab* 90:4792-4796
4. **Wolk R, Berger P, Lennon RJ, Brilakis ES, Davison DE, Somers VK** 2007 Association between plasma adiponectin levels and unstable coronary syndromes. *Eur Heart J* 28:292-8
5. **Lawlor DA, Davey Smith G, Ebrahim S, Thompson C, Sattar N** 2005 Plasma adiponectin levels are associated with insulin resistance, but do not predict future risk of coronary heart disease in women. *J Clin Endocrinol Metab* 90:5677-83
6. **Lindsay RS, Resnick HE, Zhu J, Tun ML, Howard BV, Zhang Y, Yeh J, Best LG** 2005 Adiponectin and coronary heart disease. The Strong Heart Study. *Arterioscler Thromb Vasc Biol* 25:15-6
7. **Sattar N, Wannamethee G, Sarwar N, Tchernova J, Cherry L, Wallace AM, Danesh J, Whincup PH** 2006 Adiponectin and coronary heart disease: A prospective study and meta-analysis. *Circulation* 114:623-629
8. **Koenig W, Khuseynova N, Baumert J, Meisinger C, Lowel H** 2006 Serum concentrations of adiponectin and risk of type 2 diabetes mellitus and coronary heart disease in apparently healthy middle-aged men: results from the 18-year follow-up of a large cohort from southern Germany. *J Am Coll Cardiol* 48:1369-77
9. **Schulze MB, Shai I, Rimm EB, Li T, Rifai N, Hu FB** 2006 Adiponectin and future coronary heart disease events among men with type 2 diabetes. *Diabetes* 54:534-539
10. **Pischon T, Girman C, Hotamisligil GS, Rifai N, Hu FB, Rimm EB** 2004 Plasma adiponectin levels and risk of myocardial infarction in men. *JAMA* 291:1730-1731
11. **Zoccali C, Mallamaci F, Tripepi G, Benedetto FA, Cutrupi S, Parlongo S, Malatino LS, Bonanno G, Seminara G, Rapisarda F, Fatuzzo P, Buemi M, Nicocia G, Tanaka S, Ouchi N, Kihara S, Funahashi T, Matsuzawa Y** 2006 Adiponectin, metabolic risk factors, and cardiovascular events among patients with end-stage renal disease. *J Am Soc Nephrol* 13:134-141
12. **Efstathiou SP, Tsioulos DI, Tsiakou AG, Gratsias YE, Pefanis AV, Mountokalakis TD** 2005 Plasma adiponectin levels and five-year survival after first-ever ischemic stroke. *Stroke* 36:1915-1918
13. **Frystyk J, Berne C, Berglund L, Jensevik K, Flyvberg A, Zethelius B** 2007 Serum adiponectin is a predictor of coronary heart disease: a population-based 10-year follow-up study in elderly men. *J Clin Endocrinol Metab* 92:571-6
14. **Costacou T, Zgibor JC, Evans RW, Otvos J, Lopes-Virella MF, Tracy RP, Orchard TJ** 2004 The prospective association between adiponectin and coronary artery disease among individuals with type 1 diabetes. The Pittsburgh Epidemiology in Diabetes Complications Study. *Diabetologia* 48:41-48
15. **Lim S, Koo BK, Cho SW, Kihara S, Funahashi T, Cho YM, Kim SY, Lee HK, Shimomura I, Park KS** 2006 Association of adiponectin and resistin with cardiovascular events in Korean patients with type 2 diabetes: The Korean atherosclerosis study (KAS). A 42-month prospective study. *Atherosclerosis* [epub ahead of print]
16. **Kojima S, Funahashi T, Otsuka F, Maruyoshi H, Yamashita T, Kajiwara I, Shimomura H, Miyao Y, Fujimoto K, Sugiyama S, Sakamoto T, Yoshimura M, Ogawa H** 2007 Future adverse cardiac events can be predicted by persistently low plasma adiponectin concentrations in men and marked reductions of adiponectin in women after acute myocardial infarction. *Atherosclerosis* 194:204-213
17. **Cavusoglu E, Ruwende C, Chopra V, Yanamadala S, Eng C, Clark LT, Pinsky DJ, Marmur JD** 2006 Adiponectin is an independent predictor of all-cause mortality, cardiac mortality, and myocardial infarction in patients presenting with chest pain. *Eur Heart J* 27:2300-9

18. **Pilz S, Mangge H, Wellnitz B, Seelhorst U, Winkelmann BR, Tiran B, Boehm BO, März W** 2006 Adiponectin and mortality in patients undergoing coronary angiography. *J Clin Endocrinol Metab* 91:4277-86
19. **Kanaya AM, Wassel Fyr C, Vittinghoff E, Havel PJ, Cesari M, Nicklas B, Harris T, Newman AB, Satterfield S, Cummings SR: Health ABC Study** 2006 Serum adiponectin and coronary heart disease risk in older black and white Americans. *J Clin Endocrinol Metab* 91:5044-50
20. **Laughlin GA, Barrett-Connor E, May S, Langenberg C** 2007 Association of adiponectin with coronary heart disease and mortality. *Am J Epidemiol* 165:164-174
21. **Menon V, Li L, Wang X, Greene T, Balakrishnan V, Madero M, Pereira AA, Beck GJ, Kusek JW, Collins AJ, Levey AS, Sarnak MJ** 2006 Adiponectin and mortality in patients with chronic kidney disease. *J Am Soc Nephrol* 17:2599-606
22. **Kistorp C, Faber J, Galatius S, Gustafsson F, Frystyk J, Flyvberg A, Hildebrandt P** 2005 Plasma adiponectin, body mass index, and mortality in patients with chronic heart failure. *Circulation* 112:1756-1762
23. **George J, Patal S, Wexler D, Sharabi Y, Peleg E, Kamari Y, Sheps D, Keren G, Roth A** 2006 Circulating adiponectin concentrations in patients with congestive heart failure. *Heart* 92:1420-1424
24. **Teoh H, Strauss MH, Szmítko PE, Verma S** 2006 Adiponectin and myocardial infarction: a paradox or a paradigm? *Eur Heart J* 27:2266-8
25. **Rathmann W, Herder C** 2007 Adiponectin and cardiovascular mortality: Evidence for “reverse epidemiology”. *Horm Metab Res* 39:1-2
26. **Mooy JM, Grootenhuis PA, de Vries H, Valkenburg HA, Bouter LM, Kostense PJ, Heine RJ** 1995 Prevalence and determinants of glucose intolerance in a Dutch Caucasian population. The Hoorn Study. *Diabetes Care* 18:1270-3
27. **World Health Organization** 1999 Definition, diagnosis and classification of Diabetes Mellitus: Report of a WHO Consultation. Part 1: Diagnosis and classification of Diabetes Mellitus. Geneva: WHO/NCD/NCS/99.2
28. **Snijder MB, Heine RJ, Seidell JC, Bouter LM, Stehouwer CD, Nijpels G, Funahashi T, Matsuzawa Y, Shimomura I, Dekker JM** 2006 Associations of adiponectin with incident impaired glucose metabolism and type 2 diabetes in older men and women. *Diabetes Care* 29:2498-2503
29. **Schalkwijk CG, Chaturvedi N, Schram MT, Fuller JH, Stehouwer CD, EURODIAB Prospective Complications Study Group** 2006 Adiponectin is inversely associated with renal function in type 1 diabetic patients *J Clin Endocrinol Metab* 91:129-135
30. **Malyszko J, Malyszko JS, Brzosko S, Wolczynski S, Mysliwiec M** 2006 Adiponectin is related to CD146, a novel marker of endothelial cell activation/injury in chronic renal failure and peritoneally dialyzed patients. *J Clin Endocrinol Metab* 89:4620-4627
31. **Delaigle AM, Senou M, Guiot Y, Many MC, Brichard SM** 2006 Induction of adiponectin in skeletal muscle of type 2 diabetic mice: in vivo and in vitro studies. *Diabetologia* 49:1311-23
32. **Delaigle AM, Jonas JC, Bauche IB, Cornu O, Brichard SM** 2004 Induction of adiponectin in skeletal muscle by inflammatory cytokines: in vivo and in vitro studies. *Endocrinology* 145:5589-97
33. **Steffes MW, Gross MD, Lee DH, Schreiner PJ, Jacobs DR Jr** 2006 Adiponectin, visceral fat, oxidative stress, and early macrovascular disease: the Coronary Artery Risk Development in Young Adults Study. *Obesity (Silver Spring)* 14:319-26
34. **Kalantar-Zadeh K, Block G, Horwich T, Fonarow GC** 2004 Reverse epidemiology of conventional cardiovascular risk factors in patients with chronic heart failure. *J Am Coll Cardiol* 43:1439-44
35. **Kaysen GA** 2006 Association between inflammation and malnutrition as risk factors of cardiovascular disease. *Blood Purif* 24:51-55
36. **Marchlewska A, Stenvinkel P, Lindholm B, Danielsson A, Pecoits-Filho R, Lonnqvist F, Schalling M, Heimbürger O, Nordfors L** 2004 Reduced gene expression of adiponectin in fat tissue from patients with end-stage renal disease. *Kidney Int* 66:46-50
37. **Qi Y, Takahashi N, Hileman SM, Patel HR, Berg AH, Pajvani UB, Scherer P, Ahima S** 2006 Adiponectin acts in the brain to decrease body weight. *Nat Med* 10:524-529

38. **Lara-Castro C, Luo N, Wallace P, Klein RL, Garvey WT** 2006 Adiponectin multimeric complexes and the metabolic syndrome trait cluster. *Diabetes* 55:249-259
39. **Aso Y, Yamamoto R, Wakabayashi S, Uchida T, Takayanagi K, Takebayashi K, Okuno T, Inoue T, Node K, Tobe T, Inuki T, Nakano Y** 2006 Comparison of serum high-molecular weight (HMW) adiponectin with total adiponectin concentrations in type 2 diabetic patients with coronary artery disease using a novel enzyme-linked immunosorbent assay to detect HMW adiponectin. *Diabetes* 55:1954-1960
40. **Hattori Y Hattori S, Akimoto K, Nishikimi T, Suzuki K, Matsuoka H, Kasai K** 2007 Globular adiponectin activates nuclear factor- κ B and activating protein-1 and enhances angiotensin II-induced proliferation in cardiac fibroblasts. *Diabetes* 56:804-808
41. **Wannamethee SG, Whincup PH, Lennon L, Sattar N.** 2007 Circulating adiponectin levels and mortality in elderly men with and without cardiovascular disease and heart failure. *Arch Intern Med* 167:1510-1517

Figure legends:

Figure 1A. 15-year all-cause mortality according to quartiles of adiponectin in women

Figure 1B. 15-year all-cause mortality according to quartiles of adiponectin in men

Table 1A. Baseline characteristics for women according to quartiles of adiponectin

	Quartiles of adiponectin				Partial correlation ¹	P-value ²
	1 (n = 310)	2 (n = 314)	3 (n = 311)	4 (n = 313)		
Adiponectin ($\mu\text{g/l}$)	8.10 \pm 1.59	12.10 \pm 1.07	16.01 \pm 1.28	24.61 \pm 5.87		
Age (yr)	61.2 \pm 7.3	60.9 \pm 7.4	61.7 \pm 7.3	63.6 \pm 7.5	0.154	< 0.001
BMI (kg/m^2)	27.9 \pm 4.0	27.5 \pm 4.1	26.4 \pm 4.1	25.7 \pm 3.5	-0.235	< 0.001
WHR	0.88 \pm 0.07	0.85 \pm 0.07	0.84 \pm 0.07	0.82 \pm 0.07	-0.360	< 0.001
Waist (cm)	91.1 \pm 10.3	88.6 \pm 10.8	86.3 \pm 10.1	83.3 \pm 10.2	-0.307	< 0.001
Hip (cm)	103.4 \pm 7.5	103.8 \pm 7.9	102.6 \pm 7.7	101.9 \pm 7.4	-0.090	0.004
Use of anti-hypertensives (%)	31.3	25.5	14.2	19.5		< 0.001
Diastolic bp (mmHg)	82.6 \pm 10.7	80.9 \pm 10.2	80.0 \pm 10.4	79.7 \pm 10.8	-0.121	< 0.001
Systolic bp (mmHg)	138.5 \pm 21.5	134.4 \pm 20.9	134.2 \pm 20.6	133.4 \pm 20.7	-0.143	< 0.001
Cholesterol (mmol/l)	7.02 \pm 1.35	6.78 \pm 1.18	6.88 \pm 1.17	6.82 \pm 1.15	-0.038	0.232
HDL cholesterol (mmol/l)	1.23 \pm 0.90	1.40 \pm 0.33	1.50 \pm 0.31	1.65 \pm 0.39	0.449	< 0.001
Triglycerides (mmol/l)	2.09 \pm 1.22	1.56 \pm 1.02	1.33 \pm 0.53	1.21 \pm 0.54	-0.417	< 0.001
Insulin (pmol/l)	104.9 \pm 52.0	88.8 \pm 51.4	77.5 \pm 33.2	76.3 \pm 41.5	-0.260	< 0.001
Glucose (mmol/l)	6.23 \pm 2.20	5.72 \pm 1.67	5.53 \pm 1.21	5.41 \pm 1.40	-0.221	< 0.001
2-h glucose (mmol/l)	7.24 \pm 3.84	6.34 \pm 3.10	5.85 \pm 2.92	5.50 \pm 1.93	-0.275	< 0.001
HbA1c (%)	5.77 \pm 1.16	5.49 \pm 0.86	5.40 \pm 0.70	5.35 \pm 0.69	-0.190	< 0.001
GFR (ml/min/1.73 m^2)	75.9 \pm 18.2	73.7 \pm 15.7	70.5 \pm 14.6	67.6 \pm 14.2	-0.155	< 0.001
ALT (IU/l)	12.7 \pm 12.6	11.0 \pm 5.8	11.2 \pm 6.1	10.0 \pm 4.8	-0.137	< 0.001
Current cigt smok (%)	37.3	28.6	27.7	19.4		<0.001
Cig * years	270 \pm 325	219 \pm 319	212 \pm 310	163 \pm 264	-0.112	< 0.001
Alcohol (g/d)	5.3 \pm 8.5	5.8 \pm 9.7	6.2 \pm 9.9	5.0 \pm 7.6	0.004	0.090
Sport activity (%)	25.7	26.3	30.3	33.9		0.013
Cardiovascular disease	19.4	16.9	11.9	17.4		0.235

Continuous data are presented as means \pm SD and categorical data as percentages.

Abbreviations: BMI, body mass index; WHR, waist to hip ratio; HDL, high density lipoprotein; GFR, glomerular filtration rate (Cockcroft-Gault equation); ALT, alanine aminotransferase; current cigt smok, current cigarette smoking; cigt * year, product of number of cigarettes per day and years smoked

¹ Partial (Pearson) correlations are age-adjusted, except for age

² P-values are for partial correlation coefficients for continuous variables, or for chi-square test with P for linear-by-linear test for proportions

Table 1B. Baseline characteristics for men according to quartiles of adiponectin

	Quartiles of adiponectin				Partial correlation ¹	P-value ²
	1 (n = 267)	2 (n = 261)	3 (n = 277)	4 (n = 272)		
Adiponectin (µg/l)	5.54 ±0.95	7.85 ±0.60	10.27 ±0.83	15.58 ±3.71		
Age (yr)	58.3 ±6.3	60.5 ±6.8	61.7 ±7.4	63.7 ±7.2	0.208	< 0.001
BMI (kg/m ²)	27.0 ±2.9	26.7 ±2.9	25.9 ±2.9	25.1 ±2.7	-0.264	< 0.001
WHR	0.96 ±0.06	0.96 ±0.06	0.94 ±0.07	0.93 ±0.06	-0.250	< 0.001
Waist (cm)	97.1 ±8.5	96.8 ±8.7	94.6 ±9.4	92.4 ±8.7	-0.255	< 0.001
Hip (cm)	101.0 ±5.5	100.8 ±5.3	100.1 ±5.3	99.0 ±5.3	-0.151	< 0.001
Use of anti-hypertensives (%)	21.0	19.5	20.6	8.8		0.001
Diastolic bp (mmHg)	84.6 ±9.2	84.0 ±9.2	83.0 ±9.9	82.7 ±11.0	-0.094	0.006
Systolic bp (mmHg)	135.1 ±18.1	134.8 ±18.3	133.7 ±17.7	136.9 ±21.4	-0.084	0.015
Cholesterol (mmol/l)	6.37 ±1.12	6.47 ±1.14	6.34 ±1.08	6.48 ±1.13	0.042	0.221
HDL cholesterol (mmol/l)	1.07 ±0.29	1.13 ±0.24	1.18 ±0.29	1.32 ±0.34	0.304	< 0.001
Triglycerides (mmol/l)	2.06 ±1.41	1.75 ±0.87	1.53 ±0.71	1.38 ±0.70	-0.247	< 0.001
Insulin (pmol/l)	97.5 ±53.2	95.3 ±61.5	88.1 ±59.6	74.2 ±49.7	-0.190	< 0.001
Glucose (mmol/l)	5.95 ±1.44	5.95 ±1.57	5.71 ±1.18	5.55 ±1.15	-0.199	< 0.001
2-h glucose (mmol/l)	6.61 ±3.40	6.07 ±3.20	5.53 ±2.45	5.27 ±1.87	-0.220	< 0.001
HbA1c (%)	5.54 ±0.84	5.51 ±0.91	5.42 ±0.66	5.47 ±0.69	-0.096	0.006
GFR (ml/min/1.73 m ²)	86.4 ±16.9	80.8 ±14.4	78.8 ±16.5	74.5 ±17.7	-0.133	< 0.001
ALT (IU/l)	17.8 ±13.3	14.8 ±8.9	13.6 ±6.7	12.3 ±7.8	-0.157	< 0.001
Current cigt smok (%)	33.8	37.6	38.9	36.7		0.456
Cig * years	433 ±405	505 ±444	507 ±422	563 ±558	0.087	0.012
Alcohol (g/d)	14.4 ±15.0	14.0 ±16.2	11.1 ±12.8	11.7 ±13.2	-0.046	0.184
Sport activity (%)	28.6	23.9	25.8	21.8		0.117
Cardiovascular disease	19.1	22.4	24.9	18.8		0.895

Continuous data are presented as means ± SD and categorical data as percentages.

Abbreviations: BMI, body mass index; WHR, waist to hip ratio; HDL, high density lipoprotein; GFR, glomerular filtration rate (Cockcroft-Gault equation); ALT, alanine aminotransferase; current cigt smok, current cigarette smoking; cigt * year, product of number of cigarettes per day and years smoked

¹ Partial (Pearson) correlations are age-adjusted, except for age

² P-values are for partial correlation coefficients for continuous variables, or for chi-square test with P for linear-by-linear test for proportions

Table 2. Age-adjusted hazard ratios (with 95% CI) for 15-year all-cause mortality, 15-year CVD mortality, and 10-year non-fatal CVD in sex-specific quartiles of adiponectin

	15-year all-cause mortality	15-year CVD mortality	10-year non-fatal CVD
Women			
Participants at risk	1248	1220	909
Events	219	83	128
1 st quartile	1.00 reference	1.00 reference	1.00 reference
2 nd quartile	0.74 (0.50-1.10)	0.74 (0.40-1.39)	0.66 (0.42-1.06)
3 rd quartile	0.84 (0.58-1.23)	0.60 (0.31-1.15)	0.56 (0.36-0.91)
4 th quartile	0.92 (0.64-1.31)	0.88 (0.51-1.53)	0.44 (0.27-0.72)
Continuous ¹	0.98 (0.86-1.12)	0.93 (0.75-1.15)	0.72 (0.61-0.90)
Men			
Participants at risk	1077	1042	845
Events	286	121	195
1 st quartile	1.00 reference	1.00 reference	1.00 reference
2 nd quartile	1.17 (0.80-1.73)	1.14 (0.64-2.03)	0.86 (0.57-1.30)
3 rd quartile	1.26 (0.87-1.82)	1.34 (0.77-2.33)	0.99 (0.67-1.46)
4 th quartile	1.41 (0.98-2.03)	1.13 (0.64-2.00)	0.73 (0.47-1.11)
Continuous ¹	1.13 (1.00-1.28)	1.07 (0.89-1.29)	0.92 (0.79-1.06)

Abbreviations: CVD, cardiovascular disease

¹ Hazard ratio per SD change in log transformed adiponectin

Table 3. Multivariate adjusted hazard ratios (with 95% CI) for 15-year CVD mortality in sex-specific quartiles of adiponectin

Adjusted for	age, BMI, WHR	age, HDL, triglycerides	age, glucose, 2h-glucose	age, insulin	age, ALT	age, GFR, smoking ¹	all previous
Women (1220 study participants at risk with 83 deaths due to CVD)							
1 st quartile	1.0 reference	1.0 reference	1.0 reference	1.0 reference	1.0 reference	1.0 reference	1.0 reference
2 nd quartile	0.79 (0.42-1.51)	0.94 (0.49-1.79)	0.88 (0.42-1.86)	0.74 (0.39-1.41)	0.75 (0.40-1.41)	0.86 (0.45-1.69)	1.07 (0.49-2.34)
3 rd quartile	0.69 (0.36-1.34)	0.91 (0.45-1.82)	0.95 (0.46-1.93)	0.67 (0.34-1.29)	0.61 (0.32-1.17)	0.64 (0.33-1.24)	1.30 (0.60-2.81)
4 th quartile	1.13 (0.63-2.02)	1.52 (0.81-2.84)	1.36 (0.72-2.65)	0.98 (0.56-1.72)	0.90 (0.52-1.57)	1.01 (0.57-1.78)	2.36 (1.13-4.95)
Continuous ²	1.04 (0.88-1.31)	1.15 (0.90-1.46)	1.11 (0.87-1.41)	0.99 (0.80-1.23)	0.94 (0.76-1.16)	0.97 (0.79-1.20)	1.45 (1.10-1.92)
Men (1042 study participants at risk with 121 deaths due to CVD)							
1 st quartile	1.0 reference	1.0 reference	1.0 reference	1.0 reference	1.0 reference	1.0 reference	1.0 reference
2 nd quartile	1.13 (0.63-2.03)	1.31 (0.72-2.56)	1.20 (0.66-2.18)	1.12 (0.62-2.01)	1.13 (0.63-2.03)	1.10 (0.61-1.97)	1.21 (0.65-1.97)
3 rd quartile	1.54 (0.88-2.69)	1.61 (0.91-2.86)	1.44 (0.81-2.57)	1.30 (0.74-2.27)	1.33 (0.76-2.03)	1.30 (0.74-2.26)	1.59 (0.88-2.89)
4 th quartile	1.43 (0.81-2.57)	1.51 (0.82-2.77)	1.24 (0.68-2.56)	1.17 (0.60-2.08)	1.13 (0.63-2.01)	1.12 (0.63-2.01)	1.71 (0.90-3.26)
Continuous ²	1.19 (0.98-1.45)	1.20 (0.98-1.47)	1.10 (0.91-1.34)	1.09 (0.90-1.33)	1.07 (0.88-1.29)	1.08 (0.89-1.31)	1.30 (1.04-1.63)

Abbreviations: CVD, cardiovascular disease, BMI, body mass index; WHR, waist to hip ratio; HDL, High density

lipoprotein cholesterol; ALT, alanine aminotransferase; GFR, glomerular filtration rate (Cockcroft-Gault equation)

¹ adjustment for current smokers (yes/no) and product of number of cigarettes per day and years smoked

² Hazard ratio per 1 SD change in log transformed adiponectin

Table 4. Age- and sex adjusted Hazard ratios (with 95% CI) for 15-year all-cause mortality and 15-year CVD mortality in subjects with and without CVD at baseline in sex-specific quartiles of adiponectin

	15-year all-cause mortality	15-year CVD mortality	15-year all-cause mortality	15-year CVD mortality	15-year all-cause mortality	15-year CVD mortality
No history of cardiovascular disease						
	All		Women		Men	
Participants at risk	1886	1839	1040	1015	846	824
Deaths	340	115	160	51	180	64
1 st quartile	1.0 reference	1.0 reference	1.0 reference	1.0 reference	1.0 reference	1.0 reference
2 nd quartile	0.73 (0.52-1.01)	0.64 (0.37-1.12)	0.58 (0.37-0.93)	0.64 (0.30-1.37)	0.96 (0.59-1.55)	0.73 (0.33-1.64)
3 rd quartile	0.89 (0.65-1.21)	0.72 (0.43-1.21)	0.70 (0.46-1.07)	0.42 (0.19-0.95)	1.19 (0.76-1.87)	1.18 (0.57-2.41)
4 th quartile	0.96 (0.71-1.29)	0.77 (0.47-1.27)	0.73 (0.48-1.10)	0.64 (0.32-1.31)	1.32 (0.85-2.04)	1.03 (0.51-2.12)
Continuous ¹	1.00 (0.89-1.13)	0.90 (0.73-1.11)	0.90 (0.76-1.06)	0.79 (0.32-1.31)	1.14 (0.96-1.36)	1.07 (0.80-1.48)
History of cardiovascular disease						
	All		Women		Men	
Participants at risk	433	417	204	201	229	216
Deaths	164	88	59	32	105	56
1 st quartile	1.0 reference	1.0 reference	1.0 reference	1.0 reference	1.0 reference	1.0 reference
2 nd quartile	1.52 (0.92-2.50)	1.39 (0.71-2.74)	1.38 (0.64-2.99)	1.08 (0.36-3.22)	1.57 (0.80-3.05)	1.64 (0.67-4.04)
3 rd quartile	1.36 (0.82-2.26)	1.35 (0.68-2.66)	1.75 (0.77-3.99)	1.70 (0.59-5.32)	1.23 (0.63-2.39)	1.32 (0.54-3.27)
4 th quartile	1.89 (1.16-3.06)	1.64 (0.85-3.17)	1.85 (0.91-3.76)	1.70 (0.67-4.29)	1.87 (0.95-3.67)	1.60 (0.63-4.11)
Continuous ¹	1.29 (1.07-1.55)	1.27 (0.98-1.63)	1.31 (1.00-1.72)	1.32 (0.91-1.91)	1.27 (0.99-1.63)	1.22 (0.87-1.73)

Abbreviations: CVD, cardiovascular disease

¹ Hazard ratio per 1 SD change in log transformed adiponectin

Figure 1A

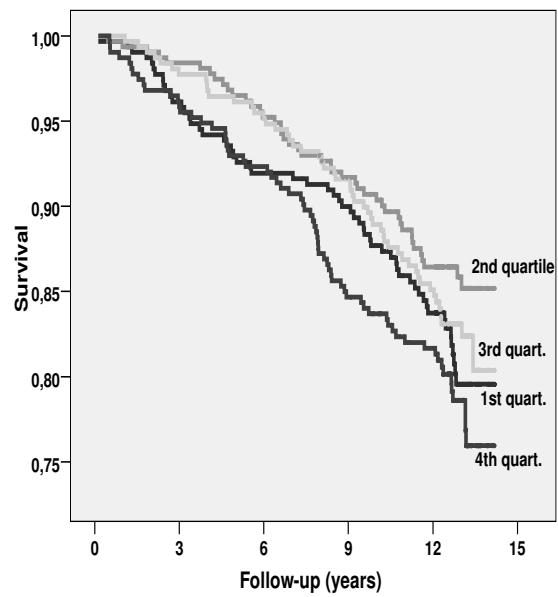


Figure 1B

